

1B/142 Great North Road Five Dock NSW



Right at the heart of Five Docks bustling town centre, this expansive 173sqm contemporary commercial suite offers exceptional flexibility to create your ideal work environment in this ultra convenient location. Set at the rear of a two-storey contemporary building, the premises have their own stairway access and security door entry. Attractively presented and exceptionally private, the suite has a professional vibe that will appeal to medical and health consultants or a range of businesses, plenty of space for private offices and the option to retain a large open area for a fitness studio, design studio or call centre. Ideally located for staff and client convenience, its metres to renowned cafes, eateries and food shopping, with buses and carparks nearby and easy access to major road routes and the City.

+ Massive 16-metre long open plan space plus 2

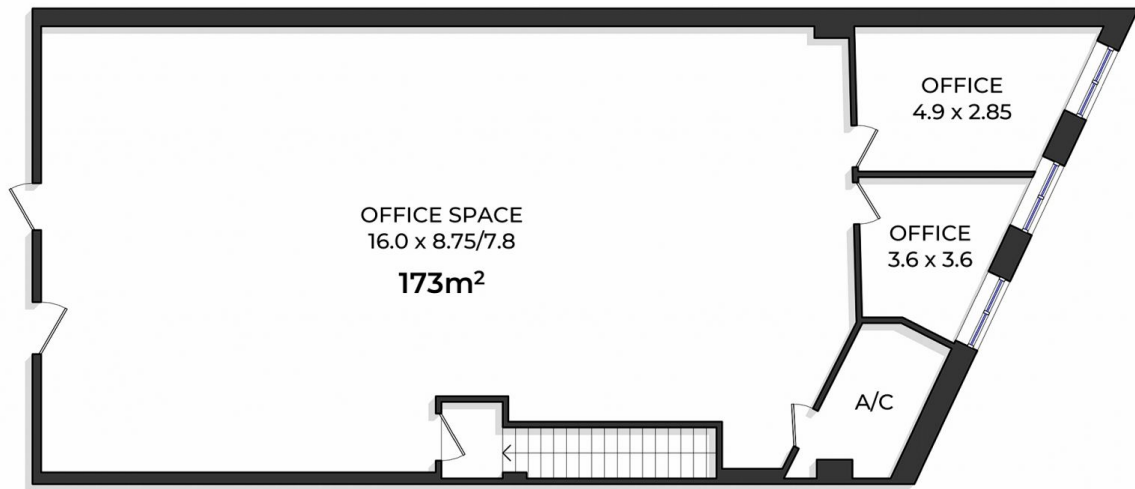
Price : \$77,850 pa
Building Size : 173 sqm
View : <https://www.rogermickhail.com.au/7920371>



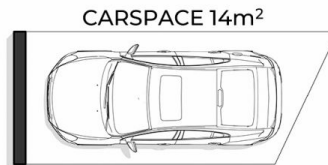
Michelle Bernardinis
02 9713 5900



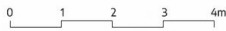
John Lagoumaris
02 9713 5900



UPPER LEVEL



LOWER LEVEL



roger m
mickhail

1/42 Great North Road Five Dock

Internal area approx.: 173sqm

The site plan and floor plan are not to scale; measurements are indicative and in meters. Bushes and trees are placed for illustration purposes. Plans should not be relied on. Interested parties should make and rely on their own enquiries.