



105/118 Great North Road Five Dock NSW

Take your position at the business hub of the Inner West. This approx 48 sqm office suite on the first floor of the Five Dock Commercial Centre" provides flexible space with a quiet professional vibe and the convenience of transport, parking, shops and cafes at the door. Right at the heart of Five Dock town centre, its ideally located to service the Inner West marketplace and beyond, with easy road access to the M4 motorway West, NW technology precincts, airport, South and the City.

+ Open plan layout with room for reception desk and partitioned offices if required

+ Patio doors to courtyard-style light well bringing in natural

[For full version visit the website](https://www.rogermickhail.com.au/79438)

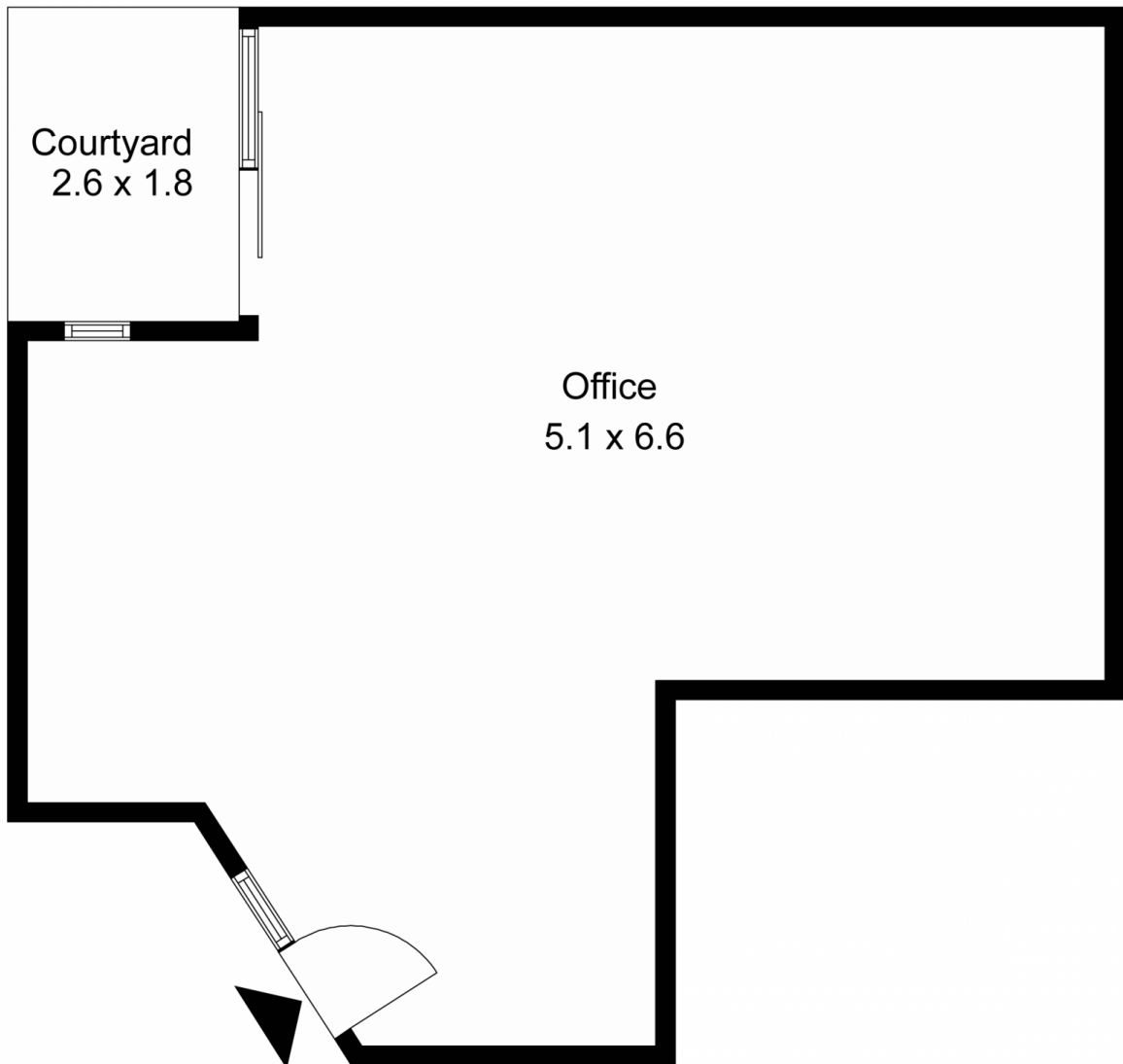
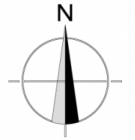
Type : Offices
Building Size : 48 sqm
View : <https://www.rogermickhail.com.au/79438>
 14



Michelle Bernardinis
02 9713 5900



John Lagounaris
02 9713 5900



Internal Floor Area : 48 Sqm

External Floor Area : 4 Sqm

Total Floor Area :52 Sqm

118 Great North Road, Five Dock

roger 
mickhail

The floor plan is not to scale; measurements are indicative and in metres. Exterior elements are not in position.
Plans should not be relied on. Interested parties should make and rely on their own enquiries.

Produced by **DIAKRIT**