

5/159-167 Victoria Road Drummoyne NSW

1 🚗

Light, private and surprisingly quiet, this upper level professional suite with Medical Use Approval offers a flexible floorplan, client convenience and high visibility in this key location at the heart of Drummoyne. Currently operating as a medical clinic, the 81sqm suite is partitioned into five consulting rooms along with a waiting room/reception area. Set in an established medical and health hub, this modern two-storey building is predominantly occupied by consultants, with a chemist on the ground floor, I-Med Radiology next door and medical specialists, physiotherapists, dentists and other health care professionals nearby. Ideally located for easy access on this major arterial road, its just 6km to Sydney CBD with the benefit of Council parking and City, Parramatta, Ryde and Macquarie buses at the doorstep. Expand or establish your practice in this family-orientated suburb at the

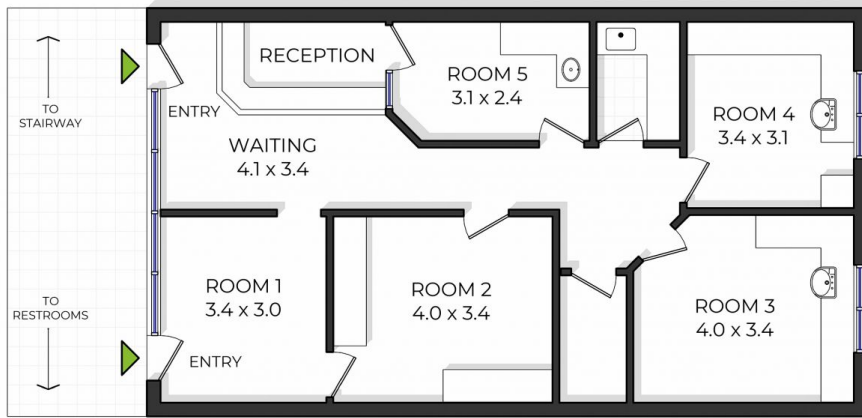
Price : \$42,000 pa
Building Size : 81 sqm
View : <https://www.rogermickhail.com.au/79438>
15



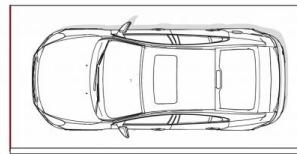
Michelle Bernardinis
02 9713 5900



John Lagounaris
02 9713 5900



FLOOR PLAN



CARSPACE



0 1 2 3 4m

5/159-167 Victoria Road, Drummoyne

The site plan and floor plan are not to scale; measurements are indicative and in meters. Bushes and trees are placed for illustration purposes. Plans should not be relied on. Interested parties should make and rely on their own enquiries.

roger m
mickhail

Internal floor area approx.: 81sqm
Carspace area approx.: 13sqm
Total area approx.: 94sqm