

G02/23 Corunna Road Stanmore NSW

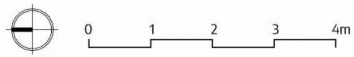
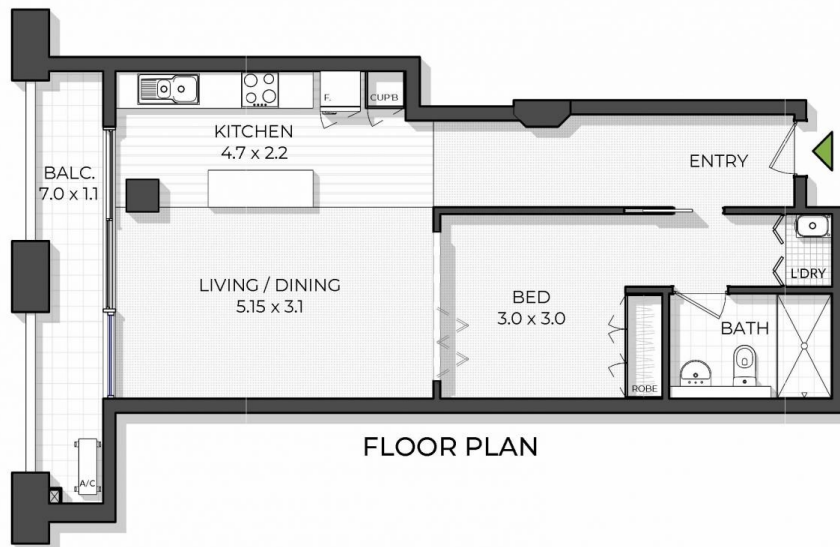
1 1

Designed for low stress lifestyle convenience, this ground floor apartment in "The Chocolate Factory" is an ideal entry to the Inner West, City pad or attractive investment with high tenant demand. The well-proportioned apartment features open living with stone kitchen flowing to a sundrenched north-facing covered balcony, partitioned bedroom, quality bathroom plus internal laundry. Surprisingly quiet yet ultra convenient, it's metres to City buses and minutes to Leichhardt and Annandale café culture, shopping centres, eateries, lively hotels and Stanmore rail. Set on the corner of Bridge Road and Corunna Road, the iconic Dollarsweets Chocolate Factory was developed into 87 warehouse apartments in 2001, and has remained popular with owner-occupiers, investors and tenants due to its quality design, spacious floorplans and ultra central location.

Price : Contact Agent
Building Size : 62 sqm
View : <https://www.rogermickhail.com.au/7991379>



John Lagounaris
02 9713 5900



roger **m**
mickhail

G02/23 Corunna Road, Stanmore

Total floor area approx. 62sqm

The site plan and floor plan are not to scale; measurements are indicative and in meters. Bushes and trees are placed for illustration purposes. Plans should not be relied on. Interested parties should make and rely on their own enquiries.