

220A Victoria Road Drummoyne NSW



This approximately 29sqm retail/commercial property is situated on the ground floor of a traditional commercial terrace, offering a multitude of possibilities for retail, office, consultancy, or service businesses. Located at a prime spot on Victoria Road, in the heart of Drummoyne's vibrant retail precinct, this affordable entry into the Inner West market provides exposure to thousands of potential clients daily and easy access to the City, Western, and Northern districts' technology parks and business centers.

+ 28sqm ground floor commercial space on a key main road.

+ Fresh paint, new carpet, and soaring ceilings.

[For full version visit the website](https://www.rogermickhail.com.au/80977)

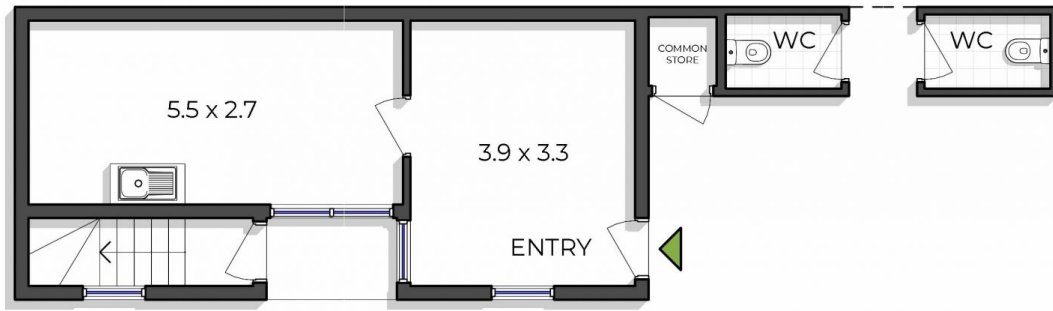
Type : Offices
Building Size : 29 sqm
View : <https://www.rogermickhail.com.au/80977>
 57



John Lagounaris
02 9713 5900



Michelle Bernardinis
02 9713 5900



REAR GROUND LEVEL FLOOR PLAN



0 1 2 3 4m

roger **m**
mickhail

220b Victoria Road, Drummoyne

The site plan and floor plan are not to scale; measurements are indicative and in meters. Bushes and trees are placed for illustration purposes. Plans should not be relied on. Interested parties should make and rely on their own enquiries.

Internal floor area approx.: 29sqm