



189 Burwood Road BURWOOD NSW



Move your business into one of the Inner Wests most successful business and retail centres with this approx 58sqm commercial property in Burwoods bustling town centre. Identified as a Major Centre by the NSW State Government, Burwood is one of Sydneys key growth areas, building on a strong local economy, excellent transport infrastructure and strategic location. Its a great location to build your business.

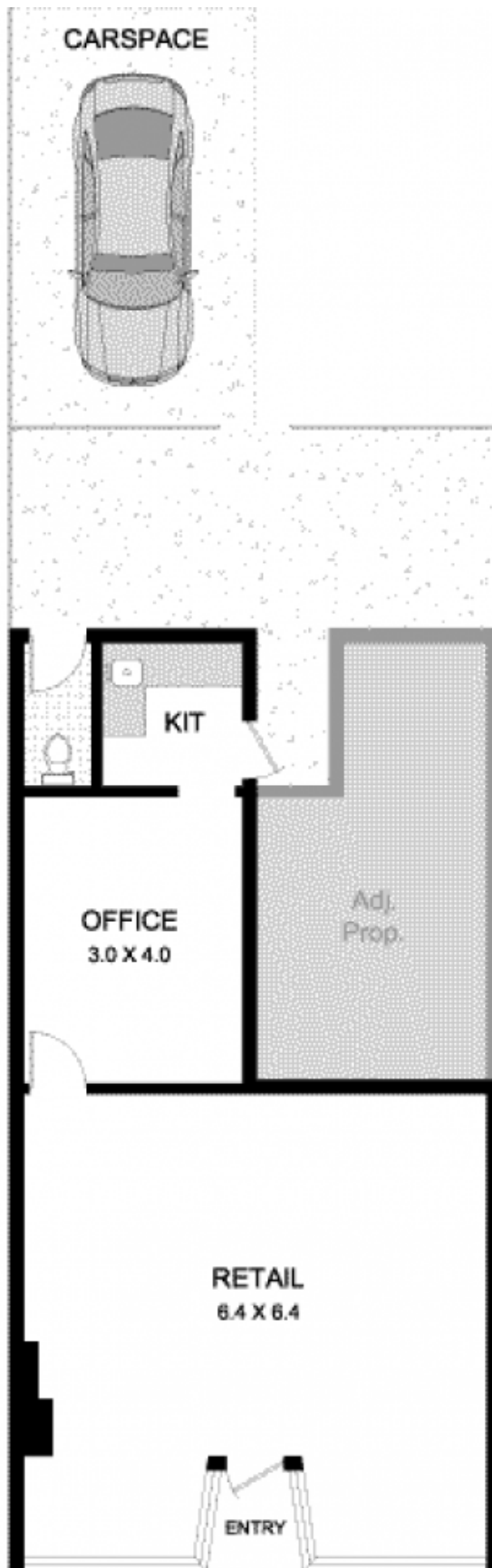
- + Taking up the whole ground floor of an older two-storey commercial terrace at the Southern end of Burwoods main retail street, its a high profile location for a shop, office or consultancy
- + Two blocks away from Burwood rail, on key bus routes

[For full version visit the website](https://www.rogermickhail.com.au)

Type : Retail
Building Size : 58 sqm
View : <https://www.rogermickhail.com.au/8152784>



Roger Mickhail
02 9713 5900



Approximate Areas:	
Internal Floorspace:	58m ²
External:	41m ²
Total:	99m ²



189 BURWOOD ROAD
BURWOOD

All information contained herein is gathered from sources we believe to be reliable. However, we cannot guarantee its accuracy and interested persons should rely on their own enquiries. Dimensions are approximate.